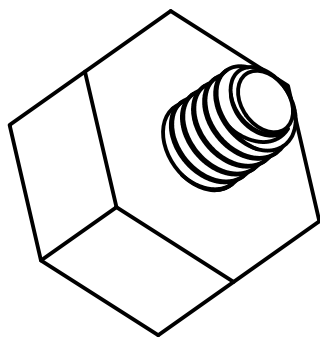
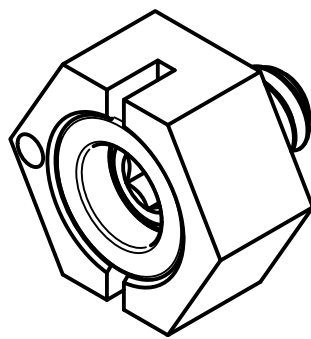
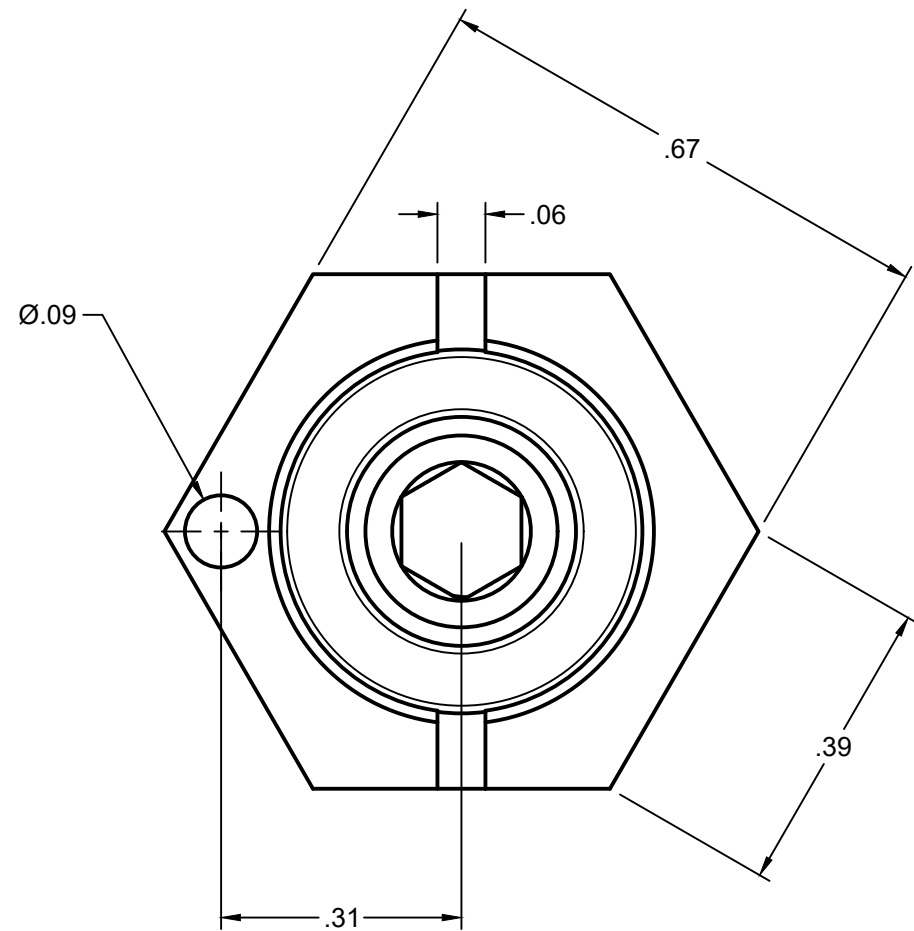
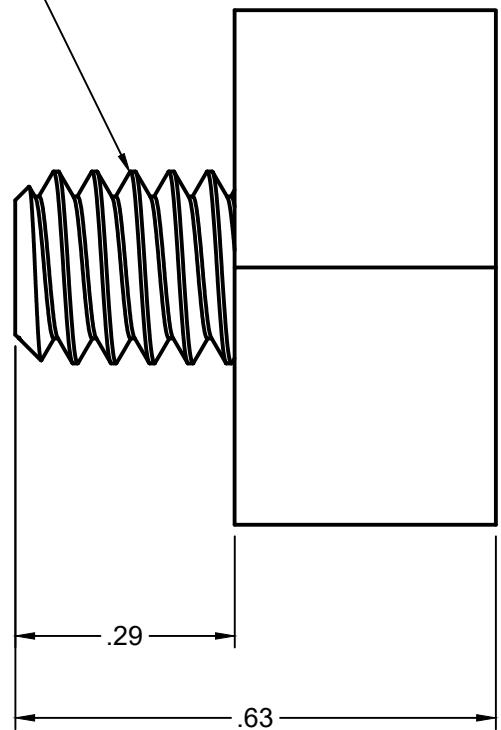





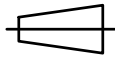

- INTERFACE DETAILS AND NOTES:
- 1. TO BE USED WITH ABSOLUTE ENCODERS. IT ALLOWS THE ADJUSTMENT OF THE HOME (ZERO) POSITION WITHOUT MOVING THE MOUNTED ENCODER
 - 2. PLACE DROP OF LOCTITE 242 ON FEMALE SCREW THREAD.
 - 3. MAKE SURE NO LOCTITE IS ON MATING SURFACES
 - 4. USE 5/32 HEX KEY TO TIGHTEN SCREW
 - 5. ALIGN MAGNET NORTH POLE WITH A $1\frac{1}{16}$ NON MAGNETIC WRENCH ALWAYS TURNING CLOCKWISE.

| REVISION HISTORY | | |
|------------------|-----------------|------------|
| REV | DESCRIPTION | DATE |
| 0 | INITIAL RELEASE | 11/15/2011 |

1/4-20 BRASS SHCS SCREW



ISOMETRIC VIEWS
SCALE:NONE

| | | | | |
|--|-----------------------|-------------------------|--|------------------------------------|
| CONFIDENTIAL - ALL RIGHTS RESERVED DISCLOSURE OR DUPLICATION PROHIBITED UNLESS OTHERWISE SPECIFIED: DIMENSIONS ARE IN DECIMAL INCH   ALL DIMENSIONS ARE REFERENCE | DRAWN: T.WOLFF | DATE: 10/01/2025 |  WWW.JORALLLC.COM | |
| | CHECKED: J.WARZALA | APPROVED: 10/02/2025 | | |
| | PART #: MAGH-ADJST | | DESCRIPTION: ADJUSTABLE POSITION MAGNET BOLT WITH RING MAGNET | SCALE: 4:1 SHEET: 1/1 |
| | EPICOR #: 19200661 | REV. 0 SIZE: B | | |

